



October 2021

Student Voting Rates for Boston College

2020 NSLVE Campus Report



Jonathan M. Tisch
College of Civic Life



INSTITUTE FOR DEMOCRACY
& HIGHER EDUCATION

October 2021

Dear Colleagues:

We are pleased to send this tailored report containing your students' voting rates for 2020. This report contains three years of relevant topline data: 2016, 2018, and 2020. As always, we disaggregate the data so you can better identify and address gaps in participation.

College and university students participated in record-breaking numbers in the 2020 election. In 2016, the Average Institutional Voting Rate was 53%. This year, it jumped to 66%. We encourage you to review Democracy Counts 2020, our most recent national report.

As in past years, we urge you to share this report widely and strategically, particularly with faculty who, in 2020, were often the most consistent communicators with students about ever-changing voting conditions and deadlines. We also urge you to review our recommendations for engaging elections to cultivate a robust and healthy campus climate for political engagement, discourse, equity, and participation: Election Imperatives (2019) and the more recent Election Imperatives: A Time of Physical Distancing and Social Action. Since "pervasive political discussions" and attentiveness to the campus culture around speech and academic freedom are among our top recommendations, we direct you to our discussion guides on talking about your NSLVE report, on free speech and inclusion, and on hot topics, our Making Sense of ... guides.

Finally, we always encourage you to work with us. Help us help you get better data by reaching out. Email IDHE@Tufts.edu for more information. And as always, watch your inbox for our periodic newsletter, IDHE Update, for announcements about upcoming releases and new resources.

Congratulations on engaging your students in the 2020 election. Remember, student political learning is a year-round objective. Elections may be episodic, but student political engagement should not be.

All the Best,
IDHE Team

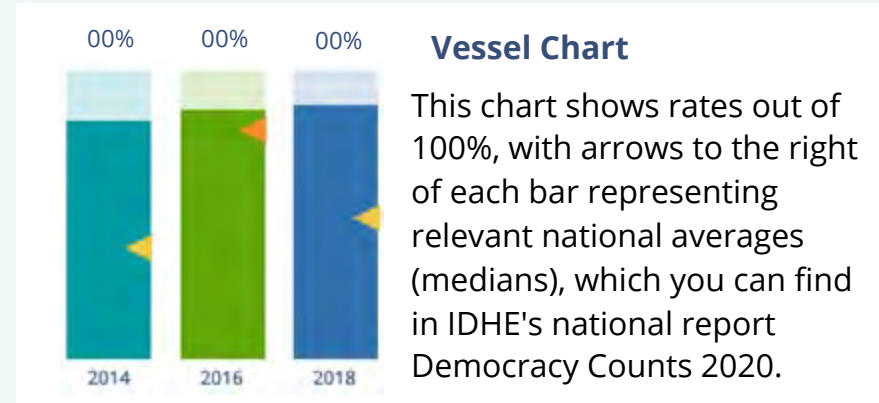


(Top Row from left) Duy Trinh, Program Administrator; Adam Gismondi, Director of Impact; Dave Brinker, Senior Researcher;
(Bottom Row from left) Nancy Thomas, Director; Norma López, Postdoctoral Scholar; Prabhat Gautam, Data Manager.

We also want to acknowledge and thank **Syed Golam Mohaimen, M.S. student in Data Science at Tufts University** for his contributions toward the creation of these reports.

In This Report

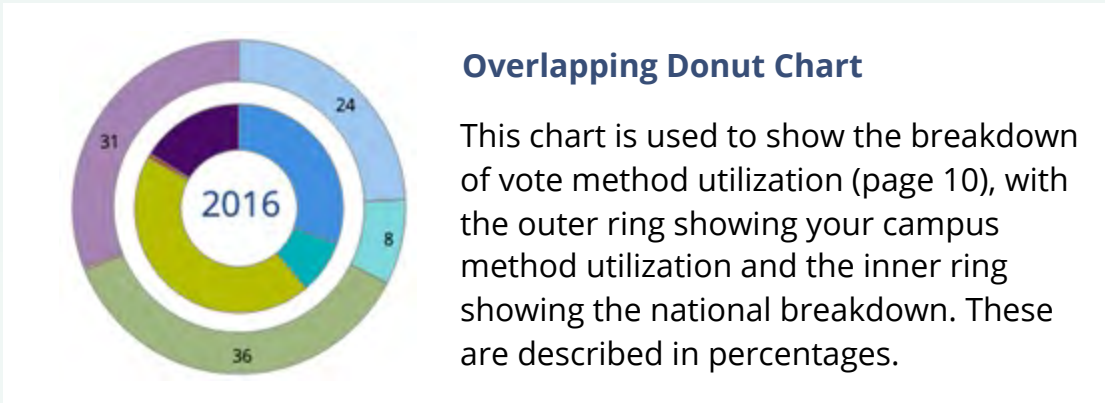
This report presents data on student voter participation rates for your campus. The topline counts on page 5 tells you how many students voted, but we encourage you to look carefully at the data on subsequent pages to learn who voted. Data are presented in the form of vessel charts, overlapping donut charts, and tables.



	2014			2018			2014-2018 Change (p.p.)
	Enrolled	Voted	Rate (%)	Enrolled	Voted	Rate (%)	
Asian	-	-	-	-	-	-	-
American Indian/ Alaska Native	-	-	-	-	-	-	-
Black	-	-	-	-	-	-	-
Hispanic	-	-	-	-	-	-	-

Tables

The tables show, on the left-side columns, the numbers of students and the rates from 2016, 2018, and 2020. On the left-side, percentage point (p.p.) changes between 2016 and 2020. A red down arrow indicates a decrease, a green up arrow indicates an increase, and a yellow arrow pointing to the right indicates no change. "-" in these tables indicates that the data is unavailable/missing, or is available for 10 or less students.



Voting, Registration and Yield Rates

YOUR INSTITUTION

72.2%

2020 Voting Rate

+17.7

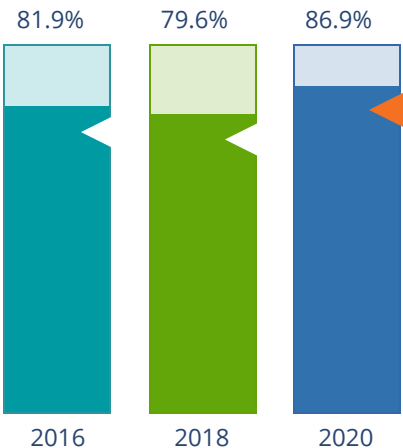
Change From 2016

ALL INSTITUTIONS

66%

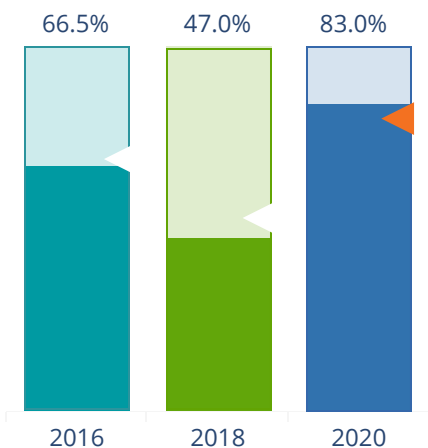
2020 Voting Rate

REGISTRATION RATE



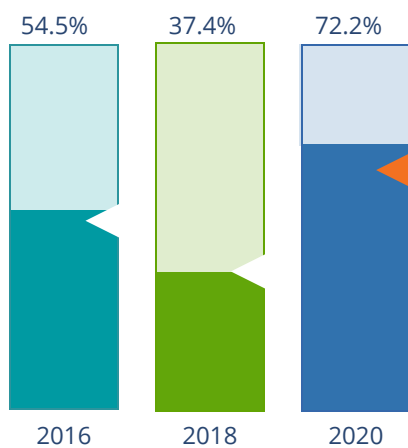
The **Registration Rate** is the percent of your voting-eligible students who registered to vote.

VOTING RATE OF REGISTERED STUDENTS



The **Voting Rate of Registered Students** is the percent of registered students who voted on Election Day. We often refer to this as the “yield” rate.

VOTING RATE



The **Voting Rate** is the percentage of eligible students who voted on Election Day. The voting rate is also the product of the registration and yield rates.

Looking Closer

Voting and Registration Rates

	2016	2018	2020	2016-2020 Change (p.p.)
Total Student Enrollment	14,152	14,324	14,775	↑ 623
(Age under 18/Unknown)	-	-	-	-
(NSC reported non-resident aliens)	1,535	1,691	1,530	↓ -5
(FERPA records blocked)	-	-	16	-
(Non-Degree Seeking Students)	-	-	-	-
Total eligible voters	12,614	12,623	13,229	↑ 615
Number of students who registered	10,326	10,046	11,496	↑ 1,170
Number of students who voted	6,871	4,721	9,547	↑ 2,676
Registration Rate %	82	80	87	↑ 5
Voting Rate of Registered Students %	67	47	83	↑ 17
Voting Rate %	54	37	72	↑ 18

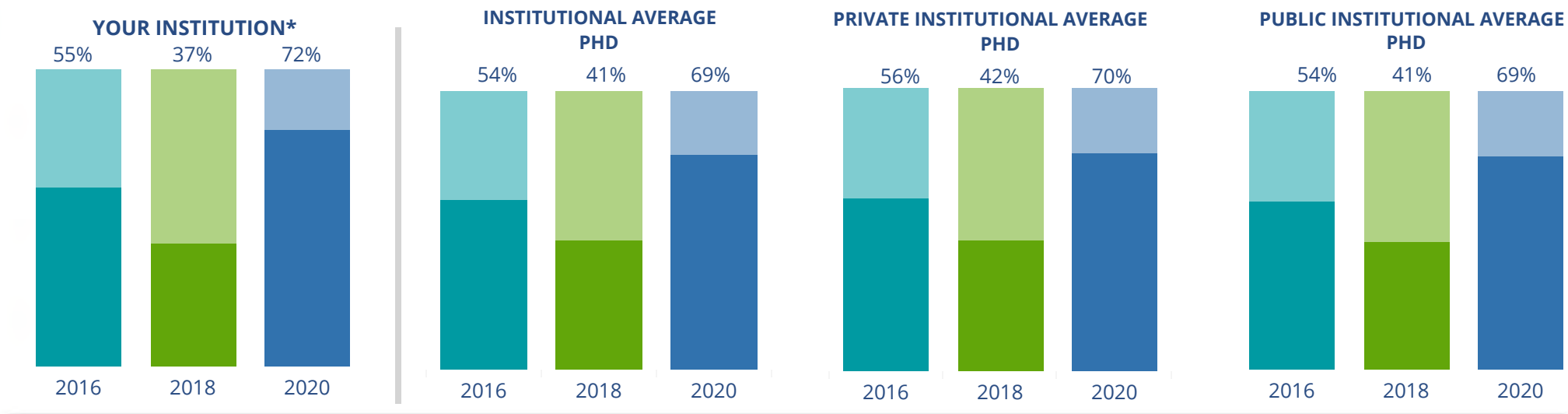
This page provides the numbers we used to calculate your voting, registration, and yield rates. The sub-categories under total student enrollment are the adjustments that we make to account for students who are ineligible to vote due to age or citizenship status. We also exclude, when correctly flagged, students who are not pursuing degrees.

We have removed non-resident aliens (international students) based on your institution's enrollment submission to the National Student Clearinghouse. This is indicated by "NSC reported non-resident aliens" on this page.

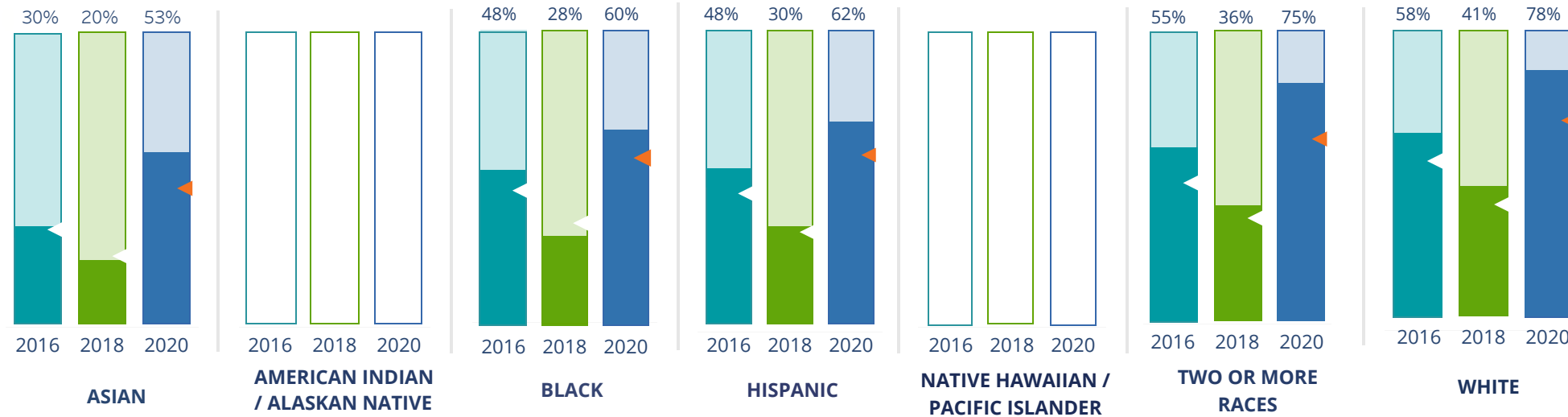
By Institution Types



These are estimated voting rates of your institution compared to the average voting rates of similar institutions in NSLVE. *"Your Institution" chart is presented at a different scale.



By Race / Ethnicity



These are estimated voting rates for race / ethnicity groups. These classifications are provided by campuses and are obtained following race reporting procedures* defined by the National Center for Education Statistics of the Institute of Education Sciences (IES). Please see our FAQ for more detail on why we cannot report national benchmark for some of the demographic groups:

<https://tufts.app.box.com/v/idhe-nsve-report-faq>

If you notice unavailable/missing data in this page, it could mean any of the following for your institution: (i) does not report this data; (ii) did not provide this data in past years; (iii) does not separately submit data for one or more of the demographic groups, or (iv) the data is reported for 10 or fewer students.

* <https://nces.ed.gov/ipeds/report-your-data/race-ethnicity-collecting-data-for-reporting-purposes>

Looking Closer

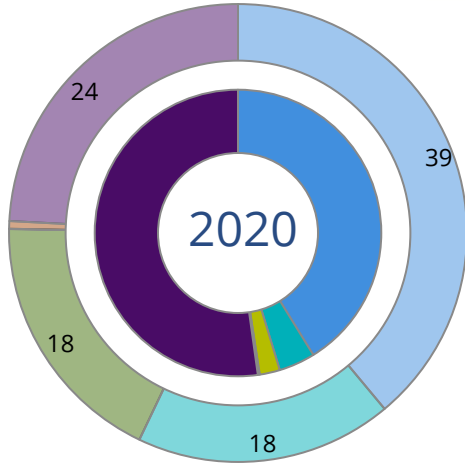
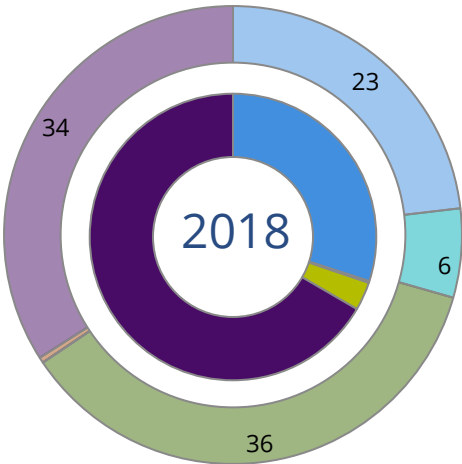
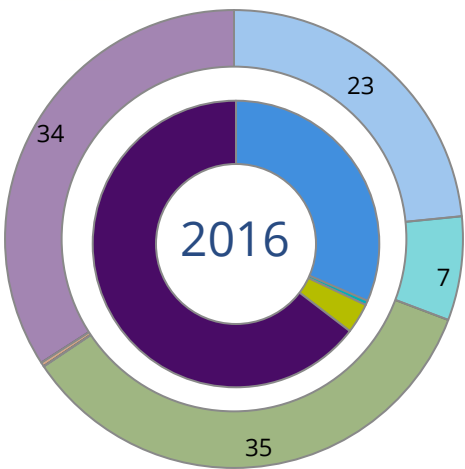
By Race/Ethnicity

This page provides the numbers we used to calculate race / ethnicity group voting rates. We include the counts of students and the change in rates between the two most recent comparable election years. If you notice unavailable/missing data in this page, it could mean any of the following for your institution: (i) does not report this data; (ii) did not provide this data in past years; (iii) does not separately submit data for one or more of the demographic groups, or (iv) the data is reported for 10 or fewer students.

	2016			2018			2020			2016-2020
	Enrolled	Voted	Rate	Enrolled	Voted	Rate	Enrolled	Voted	Rate	Change (p.p)
Asian	1,180	359	30	1,226	245	20	1,255	670	53	↑ 23
American Indian/ Alaska Native	-	-	-	-	-	-	-	-	-	-
Black	537	258	48	563	156	28	596	359	60	↑ 12
Hispanic	1,220	586	48	1,364	411	30	1,366	850	62	↑ 14
Native Hawaiian/ Pacific Islander	-	-	-	-	-	-	-	-	-	-
2 or More Races	373	204	55	448	163	36	478	356	74	↑ 20
White	8,422	4,866	58	8,349	3,413	41	7,904	6,142	78	↑ 20
Race Unknown	2,398	591	25	2,348	328	14	1,625	1,167	72	↑ 47

By Voting Method

Not-In-Person Early Vote In-Person Other Provisional Unknown



	2016		2018		2020		2016-2020	
	Voted	Rate	Voted	Rate	Voted	Rate	Change (p.p.)	
Early Vote	32	1	11	0	394	4	4	↑
In-Person on Election Day	232	3	152	3	219	2	-1	↓
Not-In-Person	2,166	32	1,418	30	3,936	41	10	↑
Other	-	-	-	-	-	-	-	
Provisional	-	-	-	-	18	0	-	
Voting Method Unknown	4,439	65	3,139	67	4,979	52	-12	↓

These are estimated rates for vote method utilization, the number of students utilizing each method, and the percent of students utilizing each method. Not all U.S. states provide information on vote method; voting method for voter files from these states are classified "Voting Method Unknown." For a list of these states, see our FAQ. <https://idhe.tufts.edu/nsive/nsive-faq#CampusReports>

By Age Group

	2016	2018	2020
18-21	45%	27%	71%
22-24	50%	35%	73%
25-29	58%	45%	75%
30-39	56%	46%	71%
40-49	56%	53%	77%
50+	85%	73%	86%

Voting is habit-forming and young voters will usually continue as voters in subsequent elections. Also, young voters are more likely to be contacted by campaigns and are visible, and therefore significant, to elected officials. While in the past, we have seen voting rates increase across age groups, in recent cycles, the most significant increases have been among first-time and the youngest voters. Some colleges serve primarily young students, traditionally viewed as students in the 18-21 or 22-24 categories here. Others have much higher numbers of enrolled older undergraduate or graduate students.

Looking Closer

By Age Group

Here, we provide the numbers of students in each age category and the voting rates for each group. These are based on the student’s age on the day of the election, as calculated by the National Student Clearinghouse using data from student enrollment records.

	2016			2018			2020			2016-2020
	Enrolled	Voted	Rate	Enrolled	Voted	Rate	Enrolled	Voted	Rate	Change (p.p)
18-21	8,763	3,910	45	8,765	2,357	27	8,120	5,759	71	↑ 26
22-24	2,190	1,093	50	2,177	770	35	1,979	1,454	73	↑ 24
25-29	1,843	1,061	58	1,887	850	45	1,734	1,299	75	↑ 17
30-39	928	523	56	1,001	457	46	968	690	71	↑ 15
40-49	250	140	56	293	154	53	256	197	77	↑ 21
50+	169	144	85	182	133	73	172	148	86	↑ 1

Looking Closer

By Sex

	2016			2018			2020			2016-2020	
	Enrolled	Voted	Rate	Enrolled	Voted	Rate	Enrolled	Voted	Rate	Change (p.p)	
Female	7,690	4,153	54	7,699	2,883	37	7,237	5,555	77	↑	23
Male	6,453	2,718	42	6,606	1,838	28	5,992	3,992	67	↑	25

These are estimated voting rates for sex groups and the numbers we used to calculate their voting rates. These classifications are provided by campuses and are obtained following the reporting procedures defined by the National Center for Education Statistics (NCES) of the Institute of Education Sciences (IES). Presently, NCES requires institutions to report students as “Male” or “Female” only.*

If you notice missing data in this page, it could mean any of the following for your institution: (i) does not report this data; (ii) did not provide this data in past years; (iii) does not separately submit data for one or more of the demographic groups, or (iv) the data is reported for 10 or fewer students.

*<https://surveys.nces.ed.gov/ipeds/public/survey-materials/faq?faqid=11>

Looking Closer

By Education Level / Undergraduate Class Year

	2016			2018			2020			2016-2020	
	Enrolled	Voted	Rate (%)	Enrolled	Voted	Rate (%)	Enrolled	Voted	Rate (%)	Change (p.p)	
EDUCATION LEVEL											
Undergraduate	9,494	4,225	45	9,539	2,585	27	8,850	6,259	71	↑	26
Graduate	4,385	2,466	56	4,513	1,998	44	4,190	3,149	75	↑	19
Class Unknown	264	180	68	253	138	55	189	139	74	↑	5
CLASS YEAR											
First Year	2,339	43	1,003	2,373	23	549	2,242	68	1,526	↑	25
Second Year	2,349	45	1,062	2,452	28	681	2,145	72	1,540	↑	27
Upper Level	4,806	45	2,160	4,695	29	1,348	4,455	72	3,187	↑	27
ENROLLMENT STATUS											
Full-time	12,906	5,997	46	12,883	3,933	31	11,610	8,329	72	↑	25
Part-time	1,237	874	71	1,422	788	55	1,619	1,218	75	↑	5

These are estimated voting rates by Education Level (undergraduate/graduate), Class Year, and Enrollment Status (full-time/part-time), and the numbers we used to calculate these rates.

If you notice missing data in this page, it could mean any of the following for your institution: (i) does not report this data; (ii) did not provide this data in past years; (iii) does not separately submit data for one or more of the demographic groups, or (iv) the data is reported for 10 or fewer students.

By Field of Study

FIELDS	2016			2018			2020			2016-2020
	Enrolled	Voted	Rate	Enrolled	Voted	Rate	Enrolled	Voted	Rate	Change (p.p)
Area, Ethnic, Cultural, and Gender Studies	–	–	–	–	–	–	–	–	–	–
Biological and Biomedical Sciences	1,076	453	42	1,169	271	23	1,323	932	70	↑ 28
Business, Management, and Marketing	2,682	1,161	43	2,752	781	28	2,561	1,808	71	↑ 27
Communication and Journalism	630	312	50	604	167	28	509	338	66	↑ 17
Computer and Information Sciences	283	108	38	429	84	20	524	327	62	↑ 24
Education	847	517	61	735	343	47	751	592	79	↑ 18
English Language and Literature	384	216	56	350	133	38	290	224	77	↑ 21

These are estimated voting rates by field of study, and the numbers we used to calculate the field of study rates. For an explanation of CIP codes, please see our FAQ.* There are roughly 8,000 fields of study among U.S. colleges and universities, so we provide rates for condensed categories.

*<https://tufts.app.box.com/v/idhe-nslve-report-faq>

By Field of Study

FIELDS	2016			2018			2020			2016-2020 Change (p.p)
	Enrolled	Voted	Rate	Enrolled	Voted	Rate	Enrolled	Voted	Rate	
Foreign Languages, Literatures, and Lingui..	96	50	52	76	28	37	53	36	68	↑ 16
Health Professions	824	471	57	909	373	41	899	675	75	↑ 18
History	259	156	60	238	104	44	219	173	79	↑ 19
Law Enforcement, Firefighting, and Protec..	15	–	–	24	11	46	22	16	73	–
Legal Professions and Studies	726	445	61	729	340	47	708	548	77	↑ 16
Liberal Arts and Sciences, and Humanities	675	289	43	545	114	21	623	424	68	↑ 25
Mathematics and Statistics	278	92	33	339	57	17	201	128	64	↑ 31
Multi/Interdisciplinary Studies	227	137	60	248	115	46	247	203	82	↑ 22
Natural Resources and Conservation	87	53	61	92	38	41	101	85	84	↑ 23
Parks, Recreation, Leisure, and Fitness Stu..	–	–	–	42	12	29	98	69	70	–
Philosophy and Religious Studies	200	81	41	193	59	31	179	112	63	↑ 22
Physical Sciences	370	133	36	369	86	23	209	140	67	↑ 31
Psychology	948	462	49	1,007	301	30	788	565	72	↑ 23
Public Administration and Social Service P..	569	399	70	547	334	61	560	457	82	↑ 11

By Field of Study

FIELDS	2016			2018			2020			2016-2020	
	Enrolled	Voted	Rate	Enrolled	Voted	Rate	Enrolled	Voted	Rate	Change (p.p)	
Social Sciences	2,147	902	42	2,146	658	31	1,786	1,287	72	↑	30
Visual and Performing Arts	112	56	50	100	27	27	80	58	73	↑	23
Unknown	289	167	58	273	145	53	215	158	73	↑	16

About This Report

Thank you for participating in the National Study of Learning, Voting, and Engagement.

Since NSLVE's launch in 2013, nearly 1,200 colleges and universities have signed up to receive their voting rates for the 2012, 2014, 2016, 2018, and 2020 federal elections.

Along with others, your institution's participation in this study has allowed us to build a robust database of over 50 million college student records, about 10 million for each election year, that serve as a foundation for innovative research on college student political learning and engagement in democracy.

NSLVE is a signature initiative of the Institute for Democracy and Higher Education (IDHE) at Tufts University's Jonathan M. Tisch College of Civic Life. The mission of IDHE is to shift college and university priorities and culture to advance political learning, agency, and equity. We achieve our mission through research, resource development, technical assistance, and advocacy.

About the Data

The voter registration and voting rates in this report reflect the percentage of your institution's students who were eligible to vote and who actually voted in the 2016, 2018, and 2020 elections.

These results are based on enrollment records your institution submitted to the National Student Clearinghouse (NSC) and publicly available voting files collected by L2 Political.

Enrollment lists are adjusted by deducting students under age 18 (at the time of the election), people identified as non-degree seeking and those identified by campuses as "nonresident aliens" (NRAs) (the federal government's category for mostly international students). Unfortunately, not all campuses report NRAs to NSC. For those campuses, we use IPEDS to calculate the number of NRA students on each campus and adjust NSC enrollment numbers to estimate the number of students to remove. We also quality check NRA removals by verifying that there is little to no discrepancy between the number of international students reported by the campus to IPEDS and to NSC. We cannot adjust subgroup analyses absent identification of NRAs verified by the process above. We welcome closer partnerships with individual colleges and universities to provide more accurate rates. For more on the data and the matching process, see our FAQ on Campus Reports.

Boston College

Thank you for the work you do to improve your students' political learning and engagement. We hope that you find your NSLVE report useful. For up-to-date news on NSLVE data, resources, and to sign up for our newsletter visit: <https://idhe.tufts.edu>.

References: IDHE encourages report recipients to share this report as broadly as possible, including posting it on the college or university's website. When doing so, please use the following citation: Institute for Democracy & Higher Education: National Study of Learning, Voting and Engagement. (2021). 2016, 2018, and 2020 report for _____ [name of institution]. Medford, MA.



Barnum Hall
163 Packard Ave.
Medford, MA 02155

tischcollege@tufts.edu
617.627.3453



Institute for Democracy & Higher Education:
National Study of Learning, Voting, and Engagement
Barnum Hall, Medford, MA 02155

Follow Us on Twitter: @TuftsIDHE
NSLVE@tufts.edu
617.627.0620