



October 2021

Student Voting Rates for SUNY at Binghamton

2020 NSLVE Campus Report

October 2021

Dear Colleagues:

We are pleased to send this tailored report containing your students' voting rates for 2020. This report contains three years of relevant topline data: 2016, 2018, and 2020. As always, we disaggregate the data so you can better identify and address gaps in participation.

College and university students participated in record-breaking numbers in the 2020 election. In 2016, the Average Institutional Voting Rate was 53%. This year, it jumped to 66%. We encourage you to review Democracy Counts 2020, our most recent national report.

As in past years, we urge you to share this report widely and strategically, particularly with faculty who, in 2020, were often the most consistent communicators with students about ever-changing voting conditions and deadlines. We also urge you to review our recommendations for engaging elections to cultivate a robust and healthy campus climate for political engagement, discourse, equity, and participation: Election Imperatives (2019) and the more recent Election Imperatives: A Time of Physical Distancing and Social Action. Since "pervasive political discussions" and attentiveness to the campus culture around speech and academic freedom are among our top recommendations, we direct you to our discussion guides on talking about your NSLVE report, on free speech and inclusion, and on hot topics, our Making Sense of ... guides.

Finally, we always encourage you to work with us. Help us help you get better data by reaching out. Email IDHE@Tufts.edu for more information. And as always, watch your inbox for our periodic newsletter, IDHE Update, for announcements about upcoming releases and new resources.

Congratulations on engaging your students in the 2020 election. Remember, student political learning is a year-round objective. Elections may be episodic, but student political engagement should not be.

All the Best,
IDHE Team

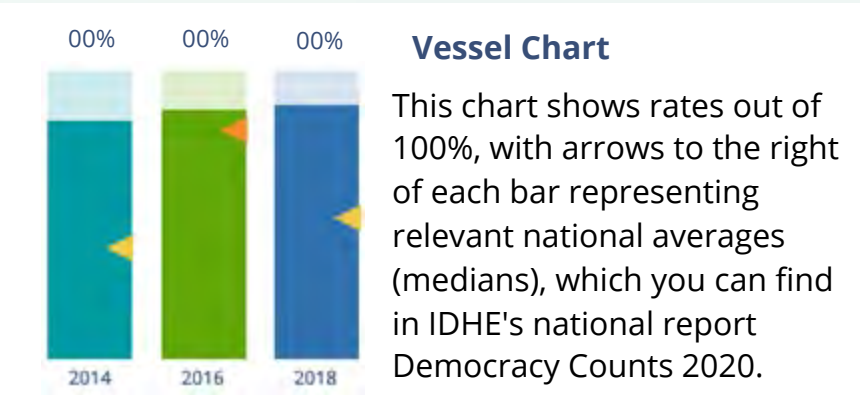


(Top Row from left) Duy Trinh, Program Administrator; Adam Gismondi, Director of Impact; Dave Brinker, Senior Researcher;
(Bottom Row from left) Nancy Thomas, Director; Norma López, Postdoctoral Scholar; Prabhat Gautam, Data Manager.

We also want to acknowledge and thank **Syed Golam Mohaimen, M.S. student in Data Science at Tufts University** for his contributions toward the creation of these reports.

In This Report

This report presents data on student voter participation rates for your campus. The topline counts on page 5 tells you how many students voted, but we encourage you to look carefully at the data on subsequent pages to learn who voted. Data are presented in the form of vessel charts, overlapping donut charts, and tables.



	2014			2018			2014-2018
	Enrolled	Voted	Rate (%)	Enrolled	Voted	Rate (%)	Change (p.p.)
Asian	-	-	-	-	-	-	-
American Indian/ Alaska Native	-	-	-	-	-	-	-
Black	-	-	-	-	-	-	-
Hispanic	-	-	-	-	-	-	-

Tables

The tables show, on the left-side columns, the numbers of students and the rates from 2016, 2018, and 2020. On the left-side, percentage point (p.p.) changes between 2016 and 2020. A red down arrow indicates a decrease, a green up arrow indicates an increase, and a yellow arrow pointing to the right indicates no change. "-" in these tables indicates that the data is unavailable/missing, or is available for 10 or less students.



Voting, Registration and Yield Rates

YOUR INSTITUTION

63.7%

2020 Voting Rate

+16.1

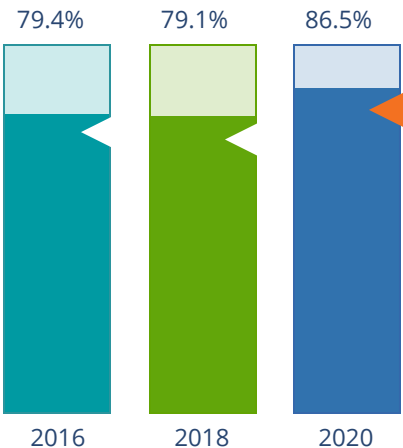
Change From 2016

ALL INSTITUTIONS

66%

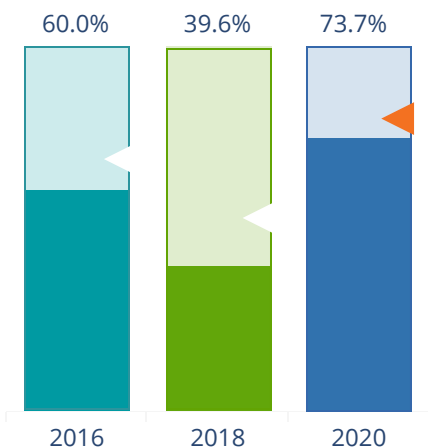
2020 Voting Rate

REGISTRATION RATE



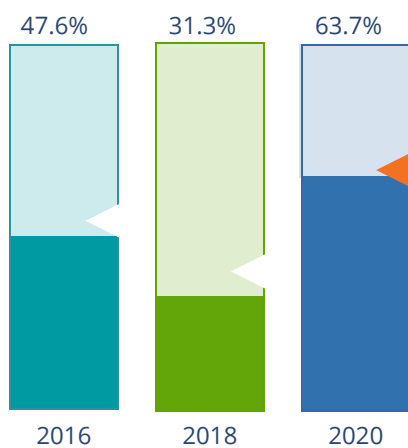
The **Registration Rate** is the percent of your voting-eligible students who registered to vote.

VOTING RATE OF REGISTERED STUDENTS



The **Voting Rate of Registered Students** is the percent of registered students who voted on Election Day. We often refer to this as the “yield” rate.

VOTING RATE



The **Voting Rate** is the percentage of eligible students who voted on Election Day. The voting rate is also the product of the registration and yield rates.

Looking Closer

Voting and Registration Rates

	2016	2018	2020	2016-2020 Change (p.p.)
Total Student Enrollment	17,027	17,502	17,979	↑ 952
(Age under 18/Unknown)	-	-	-	-
(IPEDS estimated non-resident aliens)	2,804	2,467	1,870	↓ -934
(FERPA records blocked)	-	-	-	-
(Non-Degree Seeking Students)	-	-	-	-
Total eligible voters	14,213	15,031	16,105	↑ 1,892
Number of students who registered	11,284	11,895	13,931	↑ 2,647
Number of students who voted	6,766	4,710	10,261	↑ 3,495
Registration Rate %	79	79	87	↑ 7
Voting Rate of Registered Students %	60	40	74	↑ 14
Voting Rate %	48	31	64	↑ 16

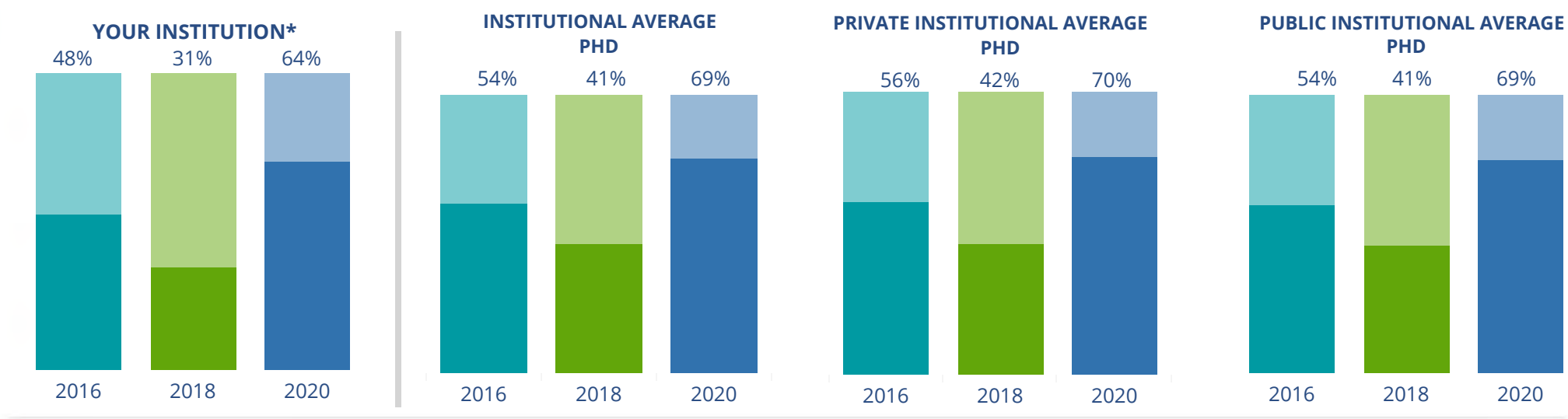
This page provides the numbers we used to calculate your voting, registration, and yield rates. The sub-categories under total student enrollment are the adjustments that we make to account for students who are ineligible to vote due to age or citizenship status. We also exclude, when correctly flagged, students who are not pursuing degrees.

We use IPEDS-derived estimates of NRAs when institutions do not submit non-resident alien status data to NSC, or we cannot verify the accuracy of the reported counts. This estimate is given by "IPEDS estimated non-resident aliens" on this page. If you believe the number of international students reported on this report is incorrect, you can manually adjust your institution's voting rates by using our recalculation tool. <https://id-he.tufts.edu/nsive/nsive-recalculation-tool>.

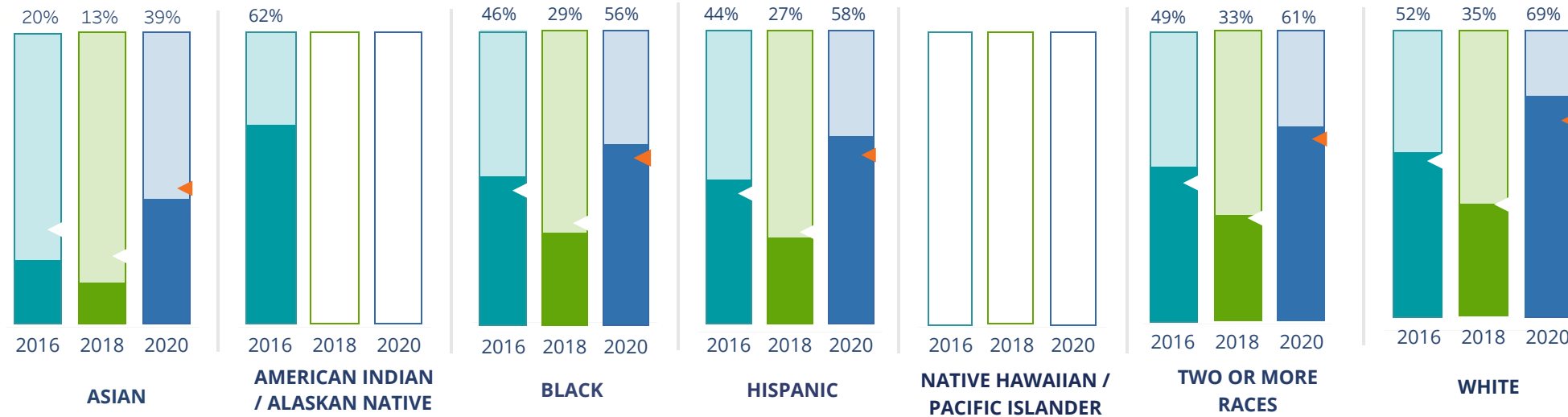
By Institution Types



These are estimated voting rates of your institution compared to the average voting rates of similar institutions in NSLVE. *"Your Institution" chart is presented at a different scale.



By Race / Ethnicity



These are estimated voting rates for race / ethnicity groups. These classifications are provided by campuses and are obtained following race reporting procedures* defined by the National Center for Education Statistics of the Institute of Education Sciences (IES). Please see our FAQ for more detail on why we cannot report national benchmark for some of the demographic groups:

<https://tufts.app.box.com/v/idhe-nsve-report-faq>

If you notice unavailable/missing data in this page, it could mean any of the following for your institution: (i) does not report this data; (ii) did not provide this data in past years; (iii) does not separately submit data for one or more of the demographic groups, or (iv) the data is reported for 10 or fewer students.

* <https://nces.ed.gov/ipeds/report-your-data/race-ethnicity-collecting-data-for-reporting-purposes>

Looking Closer

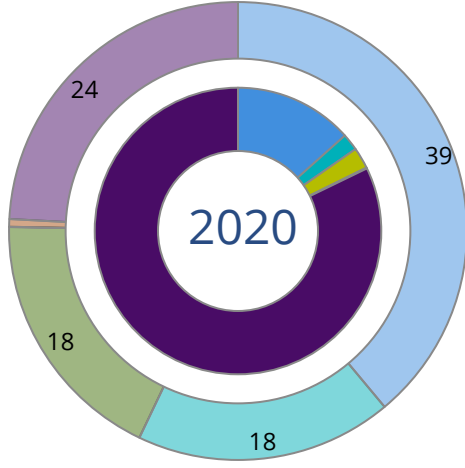
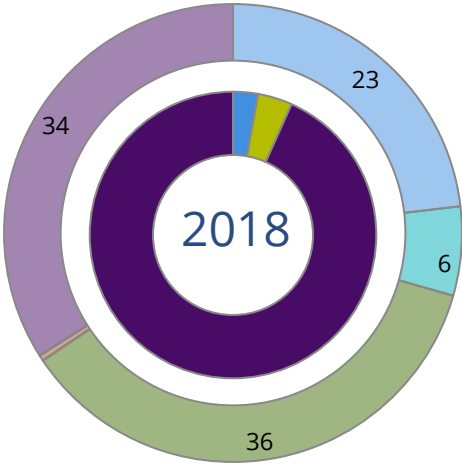
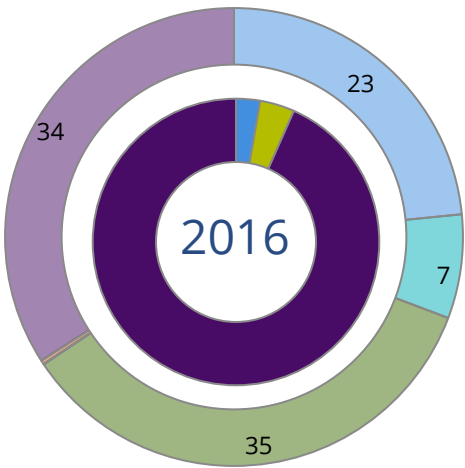
By Race/Ethnicity

This page provides the numbers we used to calculate race / ethnicity group voting rates. We include the counts of students and the change in rates between the two most recent comparable election years. If you notice unavailable/missing data in this page, it could mean any of the following for your institution: (i) does not report this data; (ii) did not provide this data in past years; (iii) does not separately submit data for one or more of the demographic groups, or (iv) the data is reported for 10 or fewer students.

	2016			2018			2020			2016-2020 Change (p.p)
	Enrolled	Voted	Rate	Enrolled	Voted	Rate	Enrolled	Voted	Rate	
Asian	3,020	597	20	2,970	387	13	2,928	1,134	39	↑ 19
American Indian/ Alaska Native	21	13	62	16	-	-	16	-	-	-
Black	829	379	46	891	257	29	865	482	56	↑ 10
Hispanic	1,603	711	44	1,778	478	27	1,985	1,147	58	↑ 13
Native Hawaiian/ Pacific Islander	12	-	-	-	-	-	-	-	-	-
2 or More Races	353	172	49	412	137	33	560	342	61	↑ 12
White	9,097	4,722	52	9,534	3,372	35	10,117	7,020	69	↑ 17
Race Unknown	2,040	167	8	1,856	71	4	1,469	123	8	↑ 0

By Voting Method

Not-In-Person Early Vote In-Person Other Provisional Unknown



	2016		2018		2020		2016-2020	
	Voted	Rate	Voted	Rate	Voted	Rate	Change (p.p.)	
Early Vote	–	–	–	–	196	2	–	
In-Person on Election Day	264	4	186	4	242	2	-2	↓
Not-In-Person	180	3	130	3	1,379	13	11	↑
Other	–	–	–	–	–	–	–	
Provisional	–	–	–	–	–	–	–	
Voting Method Unknown	6,319	93	4,390	93	8,437	82	-11	↓

These are estimated rates for vote method utilization, the number of students utilizing each method, and the percent of students utilizing each method. Not all U.S. states provide information on vote method; voting method for voter files from these states are classified “Voting Method Unknown.” For a list of these states, see our FAQ. <https://idhe.tufts.edu/nsive/nsive-faq#CampusReports>

By Age Group

	2016	2018	2020
18-21	43%	26%	61%
22-24	30%	24%	51%
25-29	30%	27%	41%
30-39	37%	32%	43%
40-49	55%	47%	62%
50+	74%	70%	74%

Voting is habit-forming and young voters will usually continue as voters in subsequent elections. Also, young voters are more likely to be contacted by campaigns and are visible, and therefore significant, to elected officials. While in the past, we have seen voting rates increase across age groups, in recent cycles, the most significant increases have been among first-time and the youngest voters. Some colleges serve primarily young students, traditionally viewed as students in the 18-21 or 22-24 categories here. Others have much higher numbers of enrolled older undergraduate or graduate students.

Looking Closer

By Age Group

Here, we provide the numbers of students in each age category and the voting rates for each group. These are based on the student's age on the day of the election, as calculated by the National Student Clearinghouse using data from student enrollment records.

	2016			2018			2020			2016-2020	
	Enrolled	Voted	Rate	Enrolled	Voted	Rate	Enrolled	Voted	Rate	Change (p.p)	
18-21	11,595	4,960	43	12,307	3,231	26	12,739	7,763	61	↑	18
22-24	2,743	829	30	2,545	620	24	2,575	1,306	51	↑	20
25-29	1,418	423	30	1,337	361	27	1,276	523	41	↑	11
30-39	824	308	37	881	285	32	951	405	43	↑	5
40-49	246	135	55	264	123	47	294	183	62	↑	7
50+	149	111	74	129	90	70	110	81	74	↓	-1

Looking Closer

By Sex

	2016			2018			2020			2016-2020	
	Enrolled	Voted	Rate	Enrolled	Voted	Rate	Enrolled	Voted	Rate	Change (p.p)	
Female	8,205	3,907	48	8,661	2,775	32	9,140	5,937	65	↑	17
Male	8,770	2,859	33	8,801	1,935	22	8,804	4,324	49	↑	17

These are estimated voting rates for sex groups and the numbers we used to calculate their voting rates. These classifications are provided by campuses and are obtained following the reporting procedures defined by the National Center for Education Statistics (NCES) of the Institute of Education Sciences (IES). Presently, NCES requires institutions to report students as “Male” or “Female” only.*

If you notice missing data in this page, it could mean any of the following for your institution: (i) does not report this data; (ii) did not provide this data in past years; (iii) does not separately submit data for one or more of the demographic groups, or (iv) the data is reported for 10 or fewer students.

*<https://surveys.nces.ed.gov/ipeds/public/survey-materials/faq?faqid=11>

Looking Closer

By Education Level / Undergraduate Class Year

	2016			2018			2020			2016-2020	
	Enrolled	Voted	Rate (%)	Enrolled	Voted	Rate (%)	Enrolled	Voted	Rate (%)	Change (p.p)	
EDUCATION LEVEL											
Undergraduate	13,102	5,428	41	13,496	3,571	26	13,812	8,225	60	↑	18
Graduate	3,630	1,259	35	3,698	1,099	30	3,793	1,869	49	↑	15
Class Unknown	243	79	33	269	40	15	340	167	49	↑	17
CLASS YEAR											
First Year	1,971	38	753	1,979	22	441	2,046	54	1,109	↑	16
Second Year	3,109	43	1,339	3,319	26	852	3,228	59	1,904	↑	16
Upper Level	8,265	41	3,415	8,473	27	2,320	8,878	61	5,380	↑	19
ENROLLMENT STATUS											
Full-time	15,738	6,212	39	16,256	4,288	26	16,716	9,547	57	↑	18
Part-time	1,237	554	45	1,207	422	35	1,229	714	58	↑	13

These are estimated voting rates by Education Level (undergraduate/graduate), Class Year, and Enrollment Status (full-time/part-time), and the numbers we used to calculate these rates.

If you notice missing data in this page, it could mean any of the following for your institution: (i) does not report this data; (ii) did not provide this data in past years; (iii) does not separately submit data for one or more of the demographic groups, or (iv) the data is reported for 10 or fewer students.

By Field of Study

FIELDS	2016			2018			2020			2016-2020 RateChange (p.p)
	Enrolled	Voted	Rate	Enrolled	Voted	Rate	Enrolled	Voted	Rate	
Area, Ethnic, Cultural, and Gender Studies	98	32	33	85	18	21	76	37	49	↑ 16
Biological and Biomedical Sciences	1,572	752	48	1,674	481	29	1,893	1,214	64	↑ 16
Business, Management, and Marketing	1,948	604	31	1,906	337	18	1,896	1,026	54	↑ 23
Computer and Information Sciences	927	179	19	963	133	14	950	320	34	↑ 14
Education	276	195	71	291	154	53	309	229	74	↑ 3
Engineering and Engineering Technologies	2,066	637	31	2,093	468	22	2,050	1,024	50	↑ 19
English Language and Literature	517	247	48	438	181	41	365	229	63	↑ 15

These are estimated voting rates by field of study, and the numbers we used to calculate the field of study rates. For an explanation of CIP codes, please see our FAQ.* There are roughly 8,000 fields of study among U.S. colleges and universities, so we provide rates for condensed categories.

*<https://tufts.app.box.com/v/idhe-nslve-report-faq>

By Field of Study

FIELDS	2016			2018			2020			2016-2020 Change (p.p)
	Enrolled	Voted	Rate	Enrolled	Voted	Rate	Enrolled	Voted	Rate	
Family and Consumer/Human Sciences	427	247	58	451	145	32	388	248	64	↑ 6
Foreign Languages, Literatures, and Lingui..	266	92	35	297	77	26	251	114	45	↑ 11
Health Professions	611	328	54	781	229	29	1,005	603	60	↑ 6
History	231	122	53	240	84	35	226	143	63	↑ 10
Law Enforcement, Firefighting, and Protec..	–	–	–	–	–	–	15	11	73	–
Liberal Arts and Sciences, and Humanities	3,019	1,223	41	2,931	750	26	3,269	1,916	59	↑ 18
Mathematics and Statistics	478	155	32	548	110	20	488	255	52	↑ 20
Multi/Interdisciplinary Studies	277	142	51	311	107	34	435	281	65	↑ 13
Natural Resources and Conservation	180	105	58	223	106	48	250	196	78	↑ 20
Philosophy and Religious Studies	74	28	38	80	32	40	70	47	67	↑ 29
Physical Sciences	380	162	43	362	113	31	375	218	58	↑ 16
Psychology	798	402	50	887	258	29	940	632	67	↑ 17
Public Administration and Social Service P..	309	206	67	332	202	61	400	316	79	↑ 12
Social Sciences	1,899	662	35	1,894	519	27	1,614	840	52	↑ 17

By Field of Study

FIELDS	2016			2018			2020			2016-2020	
	Enrolled	Voted	Rate	Enrolled	Voted	Rate	Enrolled	Voted	Rate	Change (p.p)	
Visual and Performing Arts	333	142	43	372	147	40	309	172	56	↑	13
Unknown	289	104	36	304	59	19	371	190	51	↑	15

About This Report

Thank you for participating in the National Study of Learning, Voting, and Engagement.

Since NSLVE's launch in 2013, nearly 1,200 colleges and universities have signed up to receive their voting rates for the 2012, 2014, 2016, 2018, and 2020 federal elections.

Along with others, your institution's participation in this study has allowed us to build a robust database of over 50 million college student records, about 10 million for each election year, that serve as a foundation for innovative research on college student political learning and engagement in democracy.

NSLVE is a signature initiative of the Institute for Democracy and Higher Education (IDHE) at Tufts University's Jonathan M. Tisch College of Civic Life. The mission of IDHE is to shift college and university priorities and culture to advance political learning, agency, and equity. We achieve our mission through research, resource development, technical assistance, and advocacy.

About the Data

The voter registration and voting rates in this report reflect the percentage of your institution's students who were eligible to vote and who actually voted in the 2016, 2018, and 2020 elections.

These results are based on enrollment records your institution submitted to the National Student Clearinghouse (NSC) and publicly available voting files collected by L2 Political.

Enrollment lists are adjusted by deducting students under age 18 (at the time of the election), people identified as non-degree seeking and those identified by campuses as "nonresident aliens" (NRAs) (the federal government's category for mostly international students). Unfortunately, not all campuses report NRAs to NSC. For those campuses, we use IPEDS to calculate the number of NRA students on each campus and adjust NSC enrollment numbers to estimate the number of students to remove. We also quality check NRA removals by verifying that there is little to no discrepancy between the number of international students reported by the campus to IPEDS and to NSC. We cannot adjust subgroup analyses absent identification of NRAs verified by the process above. We welcome closer partnerships with individual colleges and universities to provide more accurate rates. For more on the data and the matching process, see our FAQ on Campus Reports.

SUNY at Binghamton

Thank you for the work you do to improve your students' political learning and engagement. We hope that you find your NSLVE report useful. For up-to-date news on NSLVE data, resources, and to sign up for our newsletter visit: <https://idhe.tufts.edu>.

References: IDHE encourages report recipients to share this report as broadly as possible, including posting it on the college or university's website. When doing so, please use the following citation: Institute for Democracy & Higher Education: National Study of Learning, Voting and Engagement. (2021). 2016, 2018, and 2020 report for _____ [name of institution]. Medford, MA.



Barnum Hall
163 Packard Ave.
Medford, MA 02155

tischcollege@tufts.edu
617.627.3453



Institute for Democracy & Higher Education:
National Study of Learning, Voting, and Engagement
Barnum Hall, Medford, MA 02155

Follow Us on Twitter: @TuftsIDHE
NSLVE@tufts.edu
617.627.0620