



October 2021

Student Voting Rates for Arkansas Tech University

2020 NSLVE Campus Report

October 2021

Dear Colleagues:

We are pleased to send this tailored report containing your students' voting rates for 2020. This report contains three years of relevant topline data: 2016, 2018, and 2020. As always, we disaggregate the data so you can better identify and address gaps in participation.

College and university students participated in record-breaking numbers in the 2020 election. In 2016, the Average Institutional Voting Rate was 53%. This year, it jumped to 66%. We encourage you to review Democracy Counts 2020, our most recent national report.

As in past years, we urge you to share this report widely and strategically, particularly with faculty who, in 2020, were often the most consistent communicators with students about ever-changing voting conditions and deadlines. We also urge you to review our recommendations for engaging elections to cultivate a robust and healthy campus climate for political engagement, discourse, equity, and participation: Election Imperatives (2019) and the more recent Election Imperatives: A Time of Physical Distancing and Social Action. Since "pervasive political discussions" and attentiveness to the campus culture around speech and academic freedom are among our top recommendations, we direct you to our discussion guides on talking about your NSLVE report, on free speech and inclusion, and on hot topics, our Making Sense of ... guides.

Finally, we always encourage you to work with us. Help us help you get better data by reaching out. Email IDHE@Tufts.edu for more information. And as always, watch your inbox for our periodic newsletter, IDHE Update, for announcements about upcoming releases and new resources.

Congratulations on engaging your students in the 2020 election. Remember, student political learning is a year-round objective. Elections may be episodic, but student political engagement should not be.

All the Best,
IDHE Team

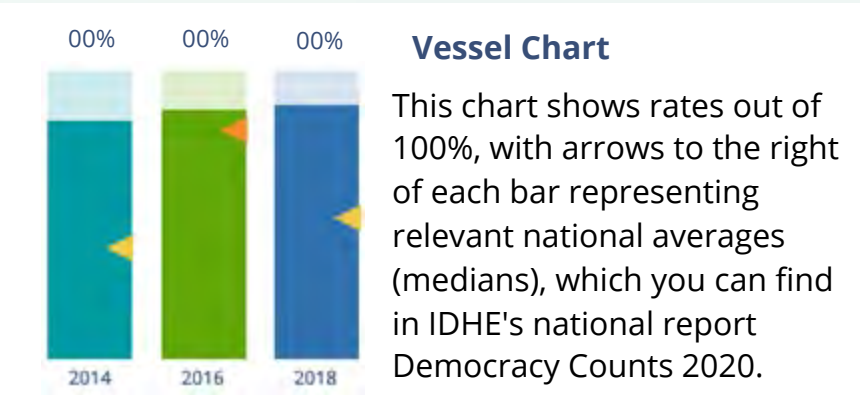


(Top Row from left) Duy Trinh, Program Administrator; Adam Gismondi, Director of Impact; Dave Brinker, Senior Researcher;
(Bottom Row from left) Nancy Thomas, Director; Norma López, Postdoctoral Scholar; Prabhat Gautam, Data Manager.

We also want to acknowledge and thank **Syed Golam Mohaimen, M.S. student in Data Science at Tufts University** for his contributions toward the creation of these reports.

In This Report

This report presents data on student voter participation rates for your campus. The topline counts on page 5 tells you how many students voted, but we encourage you to look carefully at the data on subsequent pages to learn who voted. Data are presented in the form of vessel charts, overlapping donut charts, and tables.



	2014			2018			2014-2018 Change (p.p.)
	Enrolled	Voted	Rate (%)	Enrolled	Voted	Rate (%)	
Asian	-	-	-	-	-	-	-
American Indian/ Alaska Native	-	-	-	-	-	-	-
Black	-	-	-	-	-	-	-
Hispanic	-	-	-	-	-	-	-

Tables

The tables show, on the left-side columns, the numbers of students and the rates from 2016, 2018, and 2020. On the left-side, percentage point (p.p.) changes between 2016 and 2020. A red down arrow indicates a decrease, a green up arrow indicates an increase, and a yellow arrow pointing to the right indicates no change. "-" in these tables indicates that the data is unavailable/missing, or is available for 10 or less students.



Voting, Registration and Yield Rates

YOUR INSTITUTION

51.4%

2020 Voting Rate

+7.2

Change From 2016

ALL INSTITUTIONS

66%

2020 Voting Rate

REGISTRATION RATE

Year	Registration Rate
2016	73.6%
2018	72.0%
2020	75.2%

The **Registration Rate** is the percent of your voting-eligible students who registered to vote.

VOTING RATE OF REGISTERED STUDENTS

Year	Voting Rate of Registered Students
2016	60.0%
2018	36.1%
2020	68.4%

The **Voting Rate of Registered Students** is the percent of registered students who voted on Election Day. We often refer to this as the “yield” rate.

VOTING RATE

Year	Voting Rate
2016	44.2%
2018	26.0%
2020	51.4%

The **Voting Rate** is the percentage of eligible students who voted on Election Day. The voting rate is also the product of the registration and yield rates.

Looking Closer

Voting and Registration Rates

	2016	2018	2020	2016-2020 Change (p.p.)
Total Student Enrollment	9,275	8,956	7,987	↓ -1,288
(Age under 18/Unknown)	-	-	-	-
(IPEDS estimated non-resident aliens)	424	352	225	↓ -199
(FERPA records blocked)	-	-	-	-
(Non-Degree Seeking Students)	-	-	-	-
Total eligible voters	8,843	8,596	7,751	↓ -1,092
Number of students who registered	6,509	6,193	5,825	↓ -684
Number of students who voted	3,908	2,235	3,984	↑ 76
Registration Rate %	74	72	75	↑ 2
Voting Rate of Registered Students %	60	36	68	↑ 8
Voting Rate %	44	26	51	↑ 7

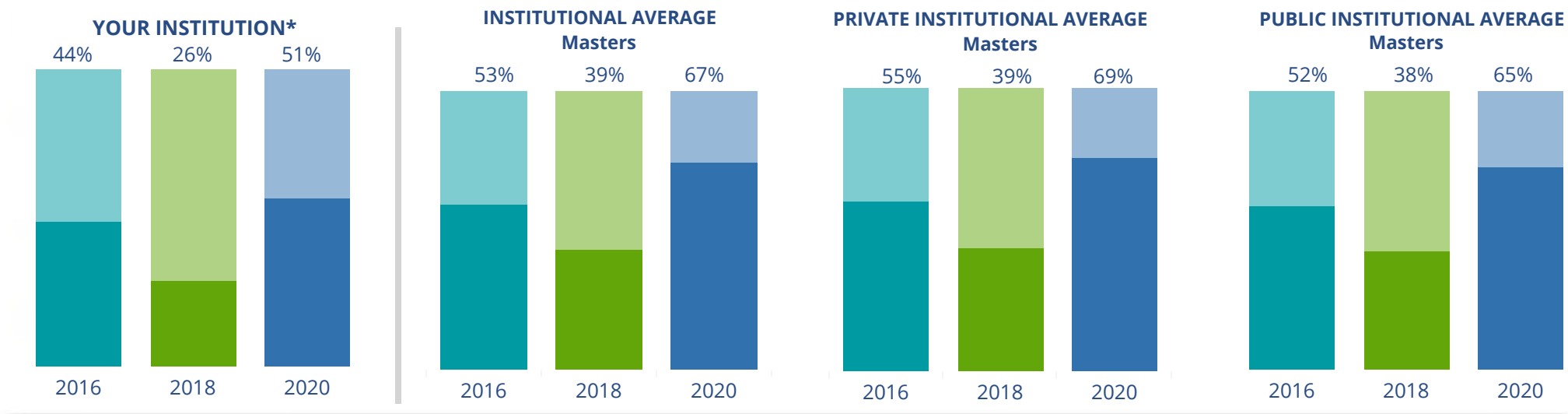
This page provides the numbers we used to calculate your voting, registration, and yield rates. The sub-categories under total student enrollment are the adjustments that we make to account for students who are ineligible to vote due to age or citizenship status. We also exclude, when correctly flagged, students who are not pursuing degrees.

We use IPEDS-derived estimates of NRAs when institutions do not submit non-resident alien status data to NSC, or we cannot verify the accuracy of the reported counts. This estimate is given by "IPEDS estimated non-resident aliens" on this page. If you believe the number of international students reported on this report is incorrect, you can manually adjust your institution's voting rates by using our recalculation tool. <https://id-he.tufts.edu/nsive/nsive-recalculation-tool>.

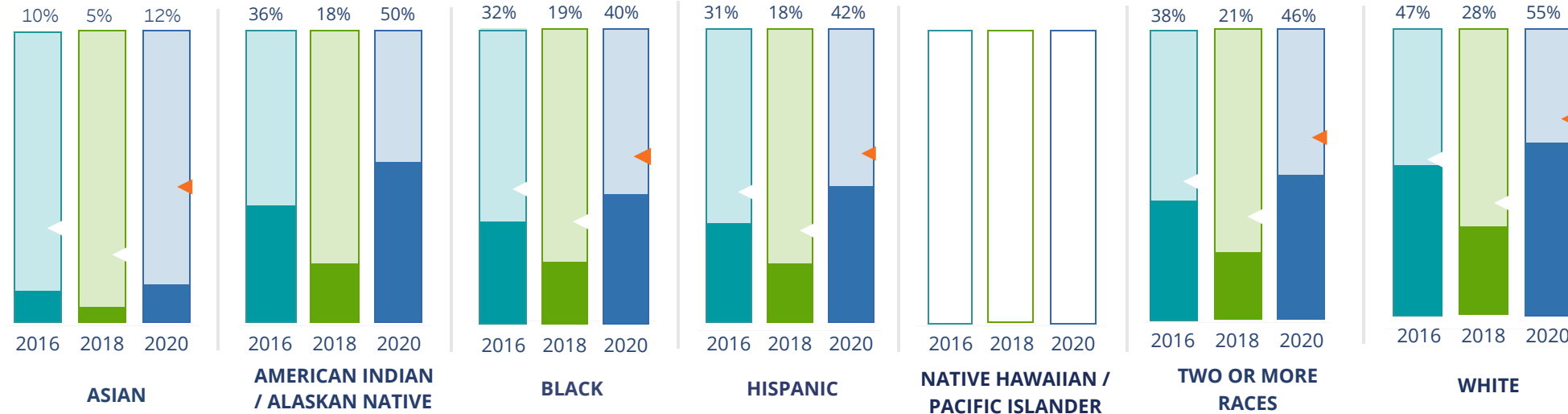
By Institution Types



These are estimated voting rates of your institution compared to the average voting rates of similar institutions in NSLVE. *"Your Institution" chart is presented at a different scale.



By Race / Ethnicity



These are estimated voting rates for race / ethnicity groups. These classifications are provided by campuses and are obtained following race reporting procedures* defined by the National Center for Education Statistics of the Institute of Education Sciences (IES). Please see our FAQ for more detail on why we cannot report national benchmark for some of the demographic groups:

<https://tufts.app.box.com/v/idhe-nsve-report-faq>

If you notice unavailable/missing data in this page, it could mean any of the following for your institution: (i) does not report this data; (ii) did not provide this data in past years; (iii) does not separately submit data for one or more of the demographic groups, or (iv) the data is reported for 10 or fewer students.

* <https://nces.ed.gov/ipeds/report-your-data/race-ethnicity-collecting-data-for-reporting-purposes>

Looking Closer

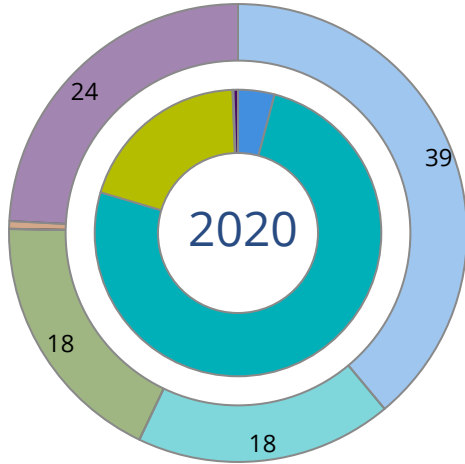
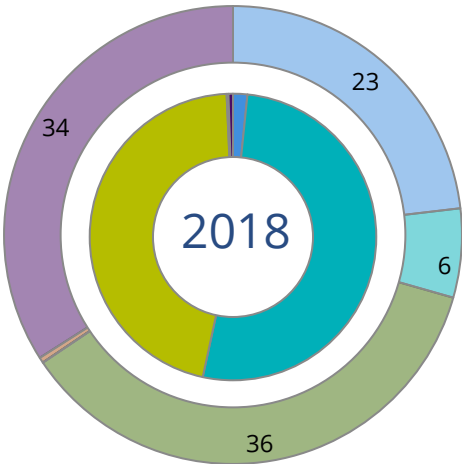
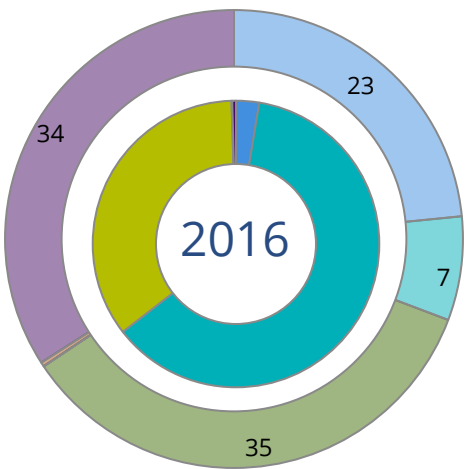
By Race/Ethnicity

This page provides the numbers we used to calculate race / ethnicity group voting rates. We include the counts of students and the change in rates between the two most recent comparable election years. If you notice unavailable/missing data in this page, it could mean any of the following for your institution: (i) does not report this data; (ii) did not provide this data in past years; (iii) does not separately submit data for one or more of the demographic groups, or (iv) the data is reported for 10 or fewer students.

	2016			2018			2020			2016-2020 Change (p.p)
	Enrolled	Voted	Rate	Enrolled	Voted	Rate	Enrolled	Voted	Rate	
Asian	209	21	10	257	13	5	231	27	12	↑ 2
American Indian/ Alaska Native	91	33	36	82	15	18	78	39	50	↑ 14
Black	788	250	32	657	125	19	550	220	40	↑ 8
Hispanic	594	181	30	667	123	18	688	288	42	↑ 11
Native Hawaiian/ Pacific Islander	-	-	-	-	-	-	-	-	-	-
2 or More Races	259	97	37	299	64	21	312	142	46	↑ 8
White	6,742	3,177	47	6,619	1,851	28	5,796	3,157	54	↑ 7
Race Unknown	509	149	29	282	44	16	264	108	41	↑ 12

By Voting Method

Not-In-Person Early Vote In-Person Other Provisional Unknown



	2016		2018		2020		2016-2020	
	Voted	Rate	Voted	Rate	Voted	Rate	Change (p.p.)	
Early Vote	2,420	62	1,157	52	3,009	76	14	↑
In-Person on Election Day	1,366	35	1,026	46	790	20	-15	↓
Not-In-Person	102	3	36	2	163	4	2	↑
Other	-	-	-	-	-	-	-	
Provisional	-	-	-	-	-	-	-	
Voting Method Unknown	18	0	12	1	20	1	0	↑

These are estimated rates for vote method utilization, the number of students utilizing each method, and the percent of students utilizing each method. Not all U.S. states provide information on vote method; voting method for voter files from these states are classified "Voting Method Unknown." For a list of these states, see our FAQ. <https://idhe.tufts.edu/nsive/nsive-faq#CampusReports>

By Age Group

	2016	2018	2020
18-21	38%	20%	49%
22-24	36%	21%	45%
25-29	44%	25%	45%
30-39	56%	40%	59%
40-49	62%	53%	74%
50+	75%	62%	72%

Voting is habit-forming and young voters will usually continue as voters in subsequent elections. Also, young voters are more likely to be contacted by campaigns and are visible, and therefore significant, to elected officials. While in the past, we have seen voting rates increase across age groups, in recent cycles, the most significant increases have been among first-time and the youngest voters. Some colleges serve primarily young students, traditionally viewed as students in the 18-21 or 22-24 categories here. Others have much higher numbers of enrolled older undergraduate or graduate students.

Looking Closer

By Age Group

Here, we provide the numbers of students in each age category and the voting rates for each group. These are based on the student's age on the day of the election, as calculated by the National Student Clearinghouse using data from student enrollment records.

	2016			2018			2020			2016-2020	
	Enrolled	Voted	Rate	Enrolled	Voted	Rate	Enrolled	Voted	Rate	Change (p.p)	
18-21	5,169	1,965	38	5,140	1,021	20	4,915	2,390	49	↑	11
22-24	1,381	500	36	1,373	290	21	1,174	533	45	↑	9
25-29	990	440	44	823	208	25	655	292	45	↑	0
30-39	960	542	56	920	368	40	694	412	59	↑	3
40-49	449	279	62	362	192	53	325	239	74	↑	11
50+	243	182	75	251	156	62	164	118	72	↓	-3

Looking Closer

By Sex

	2016			2018			2020			2016-2020	
	Enrolled	Voted	Rate	Enrolled	Voted	Rate	Enrolled	Voted	Rate	Change (p.p)	
Female	5,157	2,326	45	4,961	1,365	28	4,510	2,360	52	↑	7
Male	4,035	1,582	39	3,908	870	22	3,408	1,619	48	↑	8

These are estimated voting rates for sex groups and the numbers we used to calculate their voting rates. These classifications are provided by campuses and are obtained following the reporting procedures defined by the National Center for Education Statistics (NCES) of the Institute of Education Sciences (IES). Presently, NCES requires institutions to report students as “Male” or “Female” only.*

If you notice missing data in this page, it could mean any of the following for your institution: (i) does not report this data; (ii) did not provide this data in past years; (iii) does not separately submit data for one or more of the demographic groups, or (iv) the data is reported for 10 or fewer students.

*<https://surveys.nces.ed.gov/ipeds/public/survey-materials/faq?faqid=11>

Looking Closer

By Education Level / Undergraduate Class Year

	2016			2018			2020			2016-2020	
	Enrolled	Voted	Rate (%)	Enrolled	Voted	Rate (%)	Enrolled	Voted	Rate (%)	Change (p.p)	
EDUCATION LEVEL											
Undergraduate	8,270	3,417	41	7,816	1,793	23	7,001	3,475	50	↑	8
Graduate	782	444	57	833	381	46	668	421	63	↑	6
Class Unknown	140	47	34	220	61	28	258	88	34	↑	1
CLASS YEAR											
First Year	3,116	35	1,090	2,823	19	545	2,587	43	1,123	↑	8
Second Year	1,784	41	725	1,574	21	335	1,513	48	733	↑	8
Upper Level	3,510	47	1,649	3,571	26	941	3,126	54	1,686	↑	7
ENROLLMENT STATUS											
Full-time	7,009	2,754	39	6,532	1,383	21	6,168	3,015	49	↑	10
Part-time	2,183	1,154	53	2,337	852	36	1,759	969	55	↑	2

These are estimated voting rates by Education Level (undergraduate/graduate), Class Year, and Enrollment Status (full-time/part-time), and the numbers we used to calculate these rates.

If you notice missing data in this page, it could mean any of the following for your institution: (i) does not report this data; (ii) did not provide this data in past years; (iii) does not separately submit data for one or more of the demographic groups, or (iv) the data is reported for 10 or fewer students.

By Field of Study

FIELDS	2016			2018			2020			2016-2020	
	Enrolled	Voted	Rate	Enrolled	Voted	Rate	Enrolled	Voted	Rate	Change (p.p)	
Biological and Biomedical Sciences	291	111	38	282	59	21	275	131	48	↑	9
Business, Management, and Marketing	979	386	39	1,046	252	24	1,039	507	49	↑	9
Communication and Journalism	197	82	42	167	44	26	135	64	47	↑	6
Computer and Information Sciences	306	84	27	389	73	19	438	189	43	↑	16
Education	1,595	733	46	1,590	521	33	1,320	767	58	↑	12
Engineering and Engineering Technologies	565	193	34	593	94	16	483	223	46	↑	12
English Language and Literature	87	45	52	84	26	31	87	47	54	↑	2

These are estimated voting rates by field of study, and the numbers we used to calculate the field of study rates. For an explanation of CIP codes, please see our FAQ.* There are roughly 8,000 fields of study among U.S. colleges and universities, so we provide rates for condensed categories.

*<https://tufts.app.box.com/v/idhe-nslve-report-faq>

By Field of Study

FIELDS	2016			2018			2020			2016-2020 Change (p.p)
	Enrolled	Voted	Rate	Enrolled	Voted	Rate	Enrolled	Voted	Rate	
Family and Consumer/Human Sciences	39	18	46	46	–	–	58	30	52	↑ 6
Foreign Languages, Literatures, and Lingui..	15	–	–	–	–	–	–	–	–	–
Health Professions	1,221	543	44	1,206	291	24	1,256	618	49	↑ 5
History	71	43	61	82	36	44	71	58	82	↑ 21
Law Enforcement, Firefighting, and Protec..	346	147	42	346	92	27	370	196	53	↑ 10
Liberal Arts and Sciences, and Humanities	1,369	548	40	1,239	303	24	754	346	46	↑ 6
Mathematics and Statistics	25	12	48	21	–	–	28	19	68	↑ 20
Mechanic and Repair Technologies/Techni..	–	–	–	88	18	20	97	33	34	–
Multi/Interdisciplinary Studies	803	434	54	369	118	32	176	95	54	↓ 0
Natural Resources and Conservation	148	53	36	158	27	17	136	70	51	↑ 16
Parks, Recreation, Leisure, and Fitness Stu..	106	40	38	100	19	19	71	29	41	↑ 3
Personal and Culinary Services	–	–	–	–	–	–	23	12	52	–
Physical Sciences	129	54	42	102	32	31	107	59	55	↑ 13
Precision Production	–	–	–	38	–	–	44	20	45	–

By Field of Study

FIELDS	2016			2018			2020			2016-2020	
	Enrolled	Voted	Rate	Enrolled	Voted	Rate	Enrolled	Voted	Rate	Change (p.p)	
Psychology	317	119	38	249	55	22	277	137	49	↑	12
Public Administration and Social Service Professions	23	11	48	22	–	–	26	–	–		–
Social Sciences	125	51	41	135	47	35	112	73	65	↑	24
Visual and Performing Arts	165	60	36	244	49	20	265	106	40	↑	4
Unknown	26	–	–	14	–	–	41	22	54		–

About This Report

Thank you for participating in the National Study of Learning, Voting, and Engagement.

Since NSLVE's launch in 2013, nearly 1,200 colleges and universities have signed up to receive their voting rates for the 2012, 2014, 2016, 2018, and 2020 federal elections.

Along with others, your institution's participation in this study has allowed us to build a robust database of over 50 million college student records, about 10 million for each election year, that serve as a foundation for innovative research on college student political learning and engagement in democracy.

NSLVE is a signature initiative of the Institute for Democracy and Higher Education (IDHE) at Tufts University's Jonathan M. Tisch College of Civic Life. The mission of IDHE is to shift college and university priorities and culture to advance political learning, agency, and equity. We achieve our mission through research, resource development, technical assistance, and advocacy.

About the Data

The voter registration and voting rates in this report reflect the percentage of your institution's students who were eligible to vote and who actually voted in the 2016, 2018, and 2020 elections.

These results are based on enrollment records your institution submitted to the National Student Clearinghouse (NSC) and publicly available voting files collected by L2 Political.

Enrollment lists are adjusted by deducting students under age 18 (at the time of the election), people identified as non-degree seeking and those identified by campuses as "nonresident aliens" (NRAs) (the federal government's category for mostly international students). Unfortunately, not all campuses report NRAs to NSC. For those campuses, we use IPEDS to calculate the number of NRA students on each campus and adjust NSC enrollment numbers to estimate the number of students to remove. We also quality check NRA removals by verifying that there is little to no discrepancy between the number of international students reported by the campus to IPEDS and to NSC. We cannot adjust subgroup analyses absent identification of NRAs verified by the process above. We welcome closer partnerships with individual colleges and universities to provide more accurate rates. For more on the data and the matching process, see our FAQ on Campus Reports.

Arkansas Tech University

Thank you for the work you do to improve your students' political learning and engagement. We hope that you find your NSLVE report useful. For up-to-date news on NSLVE data, resources, and to sign up for our newsletter visit: <https://idhe.tufts.edu>.

References: IDHE encourages report recipients to share this report as broadly as possible, including posting it on the college or university's website. When doing so, please use the following citation: Institute for Democracy & Higher Education: National Study of Learning, Voting and Engagement. (2021). 2016, 2018, and 2020 report for _____ [name of institution]. Medford, MA.



Barnum Hall
163 Packard Ave.
Medford, MA 02155

tischcollege@tufts.edu
617.627.3453



Institute for Democracy & Higher Education:
National Study of Learning, Voting, and Engagement
Barnum Hall, Medford, MA 02155

Follow Us on Twitter: @TuftsIDHE
NSLVE@tufts.edu
617.627.0620