



# VOTER ENGAGEMENT CAMPUS HIGHLIGHTS

**A record 535 campuses submitted action plans to the  
ALL IN Campus Democracy Challenge for the 2022 election.**

Across the country, students, faculty, campus staff, administrators, nonprofit partners, and local election officials are making and implementing intentional plans to increase nonpartisan democratic engagement and college student voting. These leaders have developed and adapted creative ideas to support students to be voters in their unique campus contexts. Here we highlight 15 campuses that have been deeply engaged with in ALL IN for multiple election cycles. We share details about their strategies in the hopes that more colleges and universities, whether they have been doing this work for years or are just starting, can learn from these efforts.



# BOWDOIN COLLEGE



“ALL IN has helped us to build on the success of the Bowdoin Votes program by connecting us with the good work being done at neighboring colleges - partnership is a wonderful motivation!”

— WENDY VAN DAMME, Associate Director for Public Service

Bowdoin College (ME) is a private 4-year institution, that joined ALL IN in 2017. Since joining ALL IN, Bowdoin has received several notable recognitions and taken part in the *Ask Every Student* program. Bowdoin College is also a participant of the Maine Campus Voting Challenge.



- Bowdoin Votes employs two **McKeen Center** Fellows for Election Engagement that are responsible for managing student staff and volunteers and implementing the campus action plan. They are aided by four “Democracy Ambassadors” who are paid for their time working at Bowdoin Votes events. These students hosted multiple volunteer trainings, created graphics, and wrote witty emails to share election information.
- Bowdoin Votes collaborated with professors and students in the Campaigns and Elections course and hosted successful tabling events on first-year arrival day near the campus employment table and the off-campus study fair.
- Working with the Town Office, the student Fellows were trained by the Town Clerk and sworn in as Deputy Registrars. The collaboration between the college and the town has made voter registration easier for students, using their campus residence. Good communication has been helpful for all steps of sharing information about the issues, the registration and voting process, and following up on the results.
- For students registering outside of Maine, Bowdoin Votes organizes absentee ballot parties and the institution provides photocopier, postage, etc. for students to complete and return their ballots.

# CALIFORNIA STATE UNIVERSITY, CHICO



“ALL IN has helped Chico State by giving us the opportunity for national recognition for our voter engagement work.”

— ANN SCHULTE, Director of Civic Engagement

California State University, Chico (CA) is a 4-year public Hispanic-Serving Institution, that joined ALL IN in 2018. Since joining ALL IN, California State University, Chico has received several notable recognitions. California State University, Chico is also a participant of the California Secretary of State’s California University and College Ballot Bowl.



- Chico State has a key focus on pervasive communication: direct emails to students, messages through Parent Engagement portal, messages from off-campus housing, and learning management system pop-up reminders and the Wildcat online **Civic Engagement Hub**.
- The Office of Civic Engagement has coordinated classroom presentations about voter engagement, handed out business cards with a QR code to scan to register to vote, and promoted the institution’s participation in the **California Secretary of State’s Ballot Bowl** voter registration competition.

# CHANDLER-GILBERT COMMUNITY COLLEGE



**“I believe that being an ALL IN campus has given us credibility as an civically engaged institution. Supporting our mission to be a student-centered college that creates learning experiences and growth opportunities designed for our diverse communities.”**

— KATHERINE HAAR, Service-Learning and Civic Engagement Program Supervisor

Chandler-Gilbert Community College (AZ) is a public community college and a Hispanic-Serving Institution, that joined ALL IN in 2020. Since joining ALL IN, Chandler-Gilbert Community College has received several notable recognitions.



- The Office of Civic Engagement uses work-study funds to hire student leaders.
- Chandler-Gilbert Community College has a polling location on campus.
- The institution sends a text message sent to all students 18 years and older about registering to vote and a message sent through the learning management system.
- Election information and important links are provided to faculty to include in their Canvas courses and coordinate classroom presentations about voter engagement.
- The institution held a week of virtual events leading up to Constitution Day.

# CLARK ATLANTA UNIVERSITY



Clark Atlanta University (GA) is a 4-year private HBCU, that joined ALL IN in 2020. Since joining ALL IN, CAU has received several notable recognitions, is a participating campus in ALL IN's HBCU community of practice and is a member of the *Ask Every Student* program. Clark Atlanta University is also a participant of the Georgia Campus Voting Challenge.



- CAU Votes is an institution-wide coalition to support student voting which includes coordination with Morehouse College and Spelman College through the Atlanta University Center Consortium (AUCC). There are three paid Democracy Fellows that are part of CAU Votes.
- Voter registration is included in CAU Experience Week, Residence Hall meetings, and on the class registration portal.
- CAU Votes works with the Fulton County Clerk to train students to register voters and recruit student poll workers
- CAU Votes organizes a walk to the polls on election day and a #VoteTogether voting party at the Morehouse College polling location.

# COLLEGE OF THE CANYONS



College of the Canyons (CA) is a public community college and a Hispanic-Serving Institution, that joined ALL IN in 2018. Since joining ALL IN, College of the Canyons has received several notable recognitions and is a member of the *Ask Every Student* program. College of the Canyons also participates in the California Secretary of State's California University and College Ballot Bowl.



- Campus serves as a county-wide **voting location** providing students with easy access to register to vote and cast their ballot and the institution organizes a Party at the Polls at the campus Vote Center.
- College of the Canyons has created voting-specific social media accounts.
- 10-15 students with the support of the Associated Student Government are involved in the Engage the Vote Action Team to develop and implement voter engagement plans.
- Campus leaders send emails to students with election information.

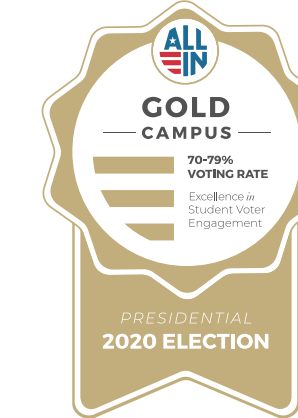
# COLORADO MOUNTAIN COLLEGE



**“ALL IN gives us the framework and helps us organize ourselves, then we get to be creative in how to get out the vote.”**

— JEN BRENNAN, College Counselor

**Colorado Mountain College (CO) is a public community college and a Hispanic-Serving Institution, that joined ALL IN in 2020. Since joining ALL IN, Colorado Mountain College has received several notable recognitions and is a participating campus in ALL IN’s HSI community of practice. Colorado Mountain College is also a participant of the Colorado Campus Voting Challenge.**



- Colorado Mountain College has an Internal resource page for students with voting information.
- Bi-annual emails are sent by financial aid about voter registrations and an email from the campus president is sent to students before Election Day.
- Two work-study student voter engagement positions help develop and implement voter engagement plans.
- Colorado Mountain College receives support from community partners like New Era Colorado to recruit volunteers for peer-to-peer voter registration events which includes printing copies of students’ IDs for first-time voters who need to include an ID with their ballot.
- Campuses are integrating online voter registration into classrooms, online events, and orientations as well as hosting events from move-in day through election day including virtual events with voter engagement programming.
- The institution is working across 11 dispersed campuses to support each campus to develop their own voting coalition that collaborates and communicates with each campus.



# DENISON UNIVERSITY



Denison University (OH) is a private 4-year institution, that joined ALL IN in 2018. Since joining ALL IN, Denison University has received several notable recognitions.



- DU Votes, the campus voting coalition, has been active since 2018 and had 10 student leaders for 2022 and partners with departments across campus.
- DU Votes has institutionalized voter registration during first-year orientation, required housing selection process, and in the mail room and works with more than 12 academic departments to institutionalize classroom voter registration and voter education.
- With a small student body, DU Votes can reach every student to support them to make a voting plan.
- There is a heavy focus on peer-to-peer engagement, which includes text-banking, with a DU Votes “Campaign Coordinator” training and leading student volunteers and building partnerships with Greek Life, Athletics, and others. This includes daily tabling and organizing voter engagement events like Drag Out the Vote and organizing Dorm Storms to visit each residence hall for voter engagement programming.
- DU Votes sends two all-campus mailings about the election.

# INVER HILLS COMMUNITY COLLEGE



**“The recognition we have received from ALL IN has been key to sparking more involvement across campus and validating the time spent on voter outreach efforts.”**

— SHANNON WILLIAMS, Coordinator of Community Based Learning

Inver Hills Community College (MN) is a public community, that joined ALL IN in 2017. Since joining ALL IN, Inver Hills Community College has received several notable recognitions, is a participating campus in ALL IN’s community college community of practice and is a member of the *Ask Every Student* program. Inver Hills Community College is also a participant of the Minnesota Secretary of State’s Democracy Cup.



- The campus voting coalition includes 12 faculty, staff, administrators and six students and receives support from national and local partners using resources from *Ask Every Student*, ALL IN, and LeadMN.
- Inver Hills Community College uses work-study funds to hire students as nonpartisan “voting ambassadors” for peer-to-peer voter and civic engagement programming. The Student Senate has a paid executive board position dedicated to voter outreach.
- A multi-pronged communication strategy has been central to their voter engagement efforts through a website, social media accounts, emails to students, learning management system messages, newsletters, college calendars which includes emails from the president to students about the culture of democracy and the importance of voting.
- Seven large-scale campus events provide voter engagement programming including orientation, welcome week, and student success day plus all Civic Holidays. Voter engagement is part of new student orientation and voter engagement tables are at all large campus events.
- Sample syllabus statement about voting was emailed to all faculty to include in their syllabi. The coalition created a 15-minute curriculum about the midterms for all faculty.
- President Michael Berndt serves on the **ALL IN Presidents Council**.

# MICHIGAN STATE UNIVERSITY



“With the support of ALL IN, Michigan State University has embedded democratic engagement in our curricular and co-curricular courses and programs. It is part of our students’ academic and student life and development.”

— RENEE BROWN, Director of the Center for Community Engaged Learning

Michigan State University (MI) is a public 4-year institution, that joined ALL IN in 2016. Since joining ALL IN, MSU has received several notable recognitions, is a participating campus in ALL IN’s Big Ten Voting Challenge and is a member of the *Ask Every Student* program. Michigan State University is also a participant of the Michigan Collegiate Voting Challenge.



- MSUvote, the campus voting coalition, has existed for 25 years and works closely with all 17 degree-granting colleges, has strong nonprofit partnerships, and has support from campus leadership and student leaders.
- Student interns and fellows are actively involved in MSUvote.
- Michigan State works with the local election official’s office to host a mobile clerks’ office for voter registration and voting for a month leading up to the election.

# NORTH CAROLINA A&T STATE UNIVERSITY



North Carolina Agricultural and Technical State University (NC) is a 4-year public HBCU, that joined ALL IN in 2017. Since joining ALL IN, NCAT has received several notable recognitions, is a participating campus in ALL IN's HBCU community of practice and is a member of the *Ask Every Student* program. North Carolina Agricultural and Technical State University is also a participant of the North Carolina Campus Voting Challenge.



- Civic Engagement Coalition formed in 2016 which relies heavily on a student-driven approach to reach every student, especially first-year students.
- The coalition focuses on cross-campus collaboration and support from external nonprofit partners and hosts numerous events and communication moments during each semester, including in odd years, that have created a culture of consistent nonpartisan democratic engagement leading up to and in-between elections.
- North Carolina A&T University organizes a Stroll to the Polls with students marching to off-campus polling location with food trucks and music on-campus for students when they return from voting. Students have also demonstrated to bring a polling location back to campus.

# PIEDMONT VIRGINIA COMMUNITY COLLEGE



Piedmont Virginia Community College (VA) is a public community college, that joined ALL IN in 2016. Since joining ALL IN, PVCC has received several notable recognitions and is a member of the *Ask Every Student* program. Piedmont Virginia Community College is also a participant of the Virginia Campus Voting Challenge.



- Nonpartisan democratic engagement at Piedmont Virginia Community College is coordinated through their **Quality Enhancement Plan** which focuses on “Civic Sense” and is led by a faculty member.
- Each semester the campus hosts Deliberative Dialogue for the campus community and there are classroom presentations about voting.
- Canvas messages and emails are sent to students with voter engagement information.
- Election Day is a school holiday.

# ST. OLAF COLLEGE



**“The support from ALL IN has allowed us to create and sustain cross-campus momentum for democratic engagement, from athletics to academics, from student life to Res Life. Creating a democratic engagement plan allowed us to take a scan of what was currently happening and be more intentional about our efforts in this election cycle.”**

— ALYSSA MELBY, Program Director for Academic Civic Engagement

St. Olaf College (MN) is a private 4-year institution, that joined ALL IN in 2019. Since joining ALL IN, St. Olaf College has received several notable recognitions including the 2020 Champion Award for having the highest overall voter turnout, is a participating campus in ALL IN’s MIAC Votes program and is a member of the *Ask Every Student* program. St. Olaf College is also a participant of the Minnesota Secretary of State’s Democracy Cup.



- St. Olaf College has a robust campus voting coalition coordinated by the Academic Civic Engagement and Dean of Students which includes individuals from student affairs, student life, students, marketing and communications, VP for Equity and Inclusion, and community partners like the local election officials.
- Two paid civic engagement fellows led 65 peer-to-peer Election Ambassadors to help students pledge and make a plan to vote with resources like [VOTE website](#) with prizes for students who help the most students pledge to vote. This included three paid BIPOC student election organizers to engage BIPOC students. Nearly 1,000 students pledged to vote.
- The campus voting coalition emails faculty with a list of nonpartisan voter engagement options for faculty to include in their classes (e.g., class presentations on voting, offering extra credit to attend election events, time off during class to vote, including VOTE website and ALL IN Platinum seal in resources).
- Athletics program is highly engaged in student voting and multiple coaches signed the [2022 Coach Pledge](#).
- Residence Life sends emails to off-campus students to help them find their polling location.
- Campus has an on-campus voting location, a long history of high levels of civic and democratic engagement, and state laws favorable to secure and easy voting.

# THE COLLEGE OF NEW JERSEY



“ALL IN has been a great resource for our campus and provides us with additional information and marketing material that has been really useful during our busy times of the semester. We also utilized our campus specific voting portal to assist with voter registration. Lastly, we have also worked closely with ALL IN to host our first NJ statewide summit that our students really enjoyed and were able to connect with other students doing this type of work. TCNJ has benefited greatly from the support that the staff has provided.”

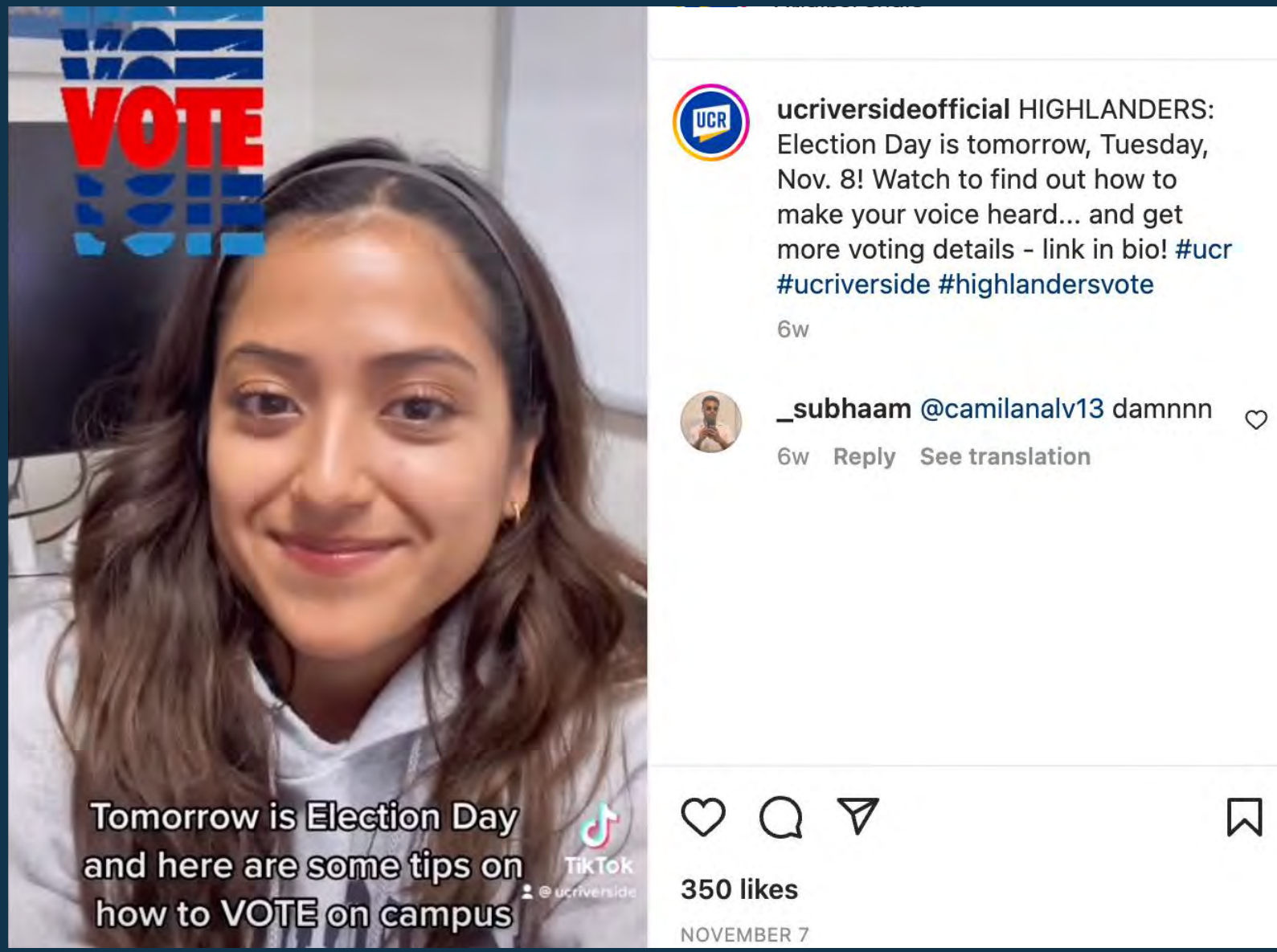
— AVANI RANA, Director of Leadership

The College of New Jersey (NJ) is a public 4-year institution, that joined ALL IN in 2017. Since joining ALL IN, TCNJ has received several notable recognitions. The College of New Jersey is also a participant of the New Jersey Campus Voting Challenge and Ballot Bowl.



- TCNJ Votes! has existed for seven years.
- The Community Engaged Learning (CEL) program has 72 courses and reached 90% of first-year students and voter engagement is part of the CEL program and new student orientation.
- Student government hosted movie screenings related to voting and hosted discussions and the student government president and the vice president of student affairs hosted an Instagram Live session about the importance of voting.
- TCNJ Votes! created a Canvas module for faculty to use in classes about voter engagement.
- Emails are sent to students to register to vote and to remind them to vote leading up to the election.
- Walk to the Polls is hosted on Election Day to create a celebratory environment.
- President Kate Foster serves on the **ALL IN Presidents' Council**.
- TCNJ was a co-host of the 2022 NJ Campus Voting Summit.

# UNIVERSITY OF CALIFORNIA, RIVERSIDE



University of California, Riverside (CA) is a 4-year public Hispanic-Serving and Asian American and Native American Pacific Islander-Serving institution, that joined ALL IN in 2019. Since joining ALL IN, the University of California, Riverside has received several notable recognitions. University of California, Riverside is also a participant of the California Secretary of State's California University and College Ballot Bowl.



- Emails are sent to all students about voter registration from the student body president.
- There is an intentional effort across campus to increase voter education and reduce barriers to voting through sharing information about elections and deadlines which includes a coordinated **social media** approach with other campus departments and organizations including 50 Instagram accounts to share voting information and deadlines.
- UC Riverside hosts a polling location on campuses and in 2022 hosted their first on-campus Vote Center which also includes a ballot dropbox.

**“Receiving recognition from ALL IN has helped us catch the eye of campus leaders. We hope to continue to work hard to gain more recognition and bring said leaders into the fold of campus-wide voter engagement.”**

— GERRY MEDINA, Leadership and Service Programs Coordinator



# WILLIAM & MARY



**“ALL IN has provided William & Mary with structure in guiding our nonpartisan voter engagement efforts and programming.”**

— RICH THOMPSON, Associate Director,  
Office of Community Engagement

William & Mary (VA) is a 4-year public institution, that joined ALL IN in 2018. Since joining ALL IN, William & Mary has received several notable recognitions and is a member of the *Ask Every Student* program. William & Mary is also a participant of the Virginia Campus Voting Challenge.



- Strong support from the Office of Community Engagement, the Provost, and the President for voter engagement.
- Voter registration is included in new student orientation. The League of Women Voters and local voter registrars work with the campus on voter registration drives during student involvement fairs and on National Voter Registration Day.
- The Office of Civic Engagement uses faculty and student listserv as well as social media to promote voter engagement and share reminders about voting deadlines and have organized relational peer-to-peer texting programs.
- William & Mary has a student body that is highly engaged in social justice and civic engagement.

To learn more about the nearly  
1000 participating ALL IN campuses  
visit [ALLINChallenge.org](https://ALLINChallenge.org).